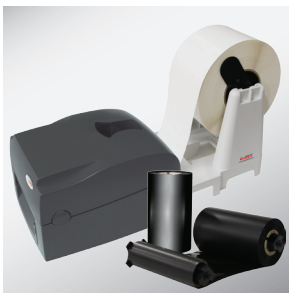




# G500/G530

High-Tech Power with a Customer Friendly Price

"Twin-Sensor Technology" makes the G500 perfect for printing on all types of specialty materials especially for retail and industrial applications.



300 meter ribbon plus the optional label stand provides maximum printing volume



"Twin-Sensor" technology allows you to use a broad range of labels



Available interface combinations include:

- USB2.0, Serial and Ethernet
- USB2.0 and Parallel



Strong and stable mechanism design for long term reliability

Barcodes Made Easy

Product Specifications  
G500/G530 Desktop Printer

Model		G500	G530
<b>Print Method</b>		Thermal Transfer / Direct Thermal	
<b>Resolution</b>		203 dpi (8 dot/mm)	300 dpi (12 dots/mm)
<b>Print Speed</b>		5 IPS (127 mm/s)	4 IPS (102 mm/s)
<b>Print Width</b>		4.25" (108 mm)	4.16" (105.7 mm)
<b>Print Length</b>		Min. 0.16" (4 mm)** ; Max. 68" (1727 mm)	Min. 0.16" (4 mm)** ; Max. 30" (762 mm)
<b>Memory</b>	<b>Flash</b>	8MB Flash (4MB for user storage)	
	<b>SDRAM</b>	16MB	
<b>Sensor Type</b>		Adjustable reflective sensor 2 fixed transmissive sensors, central aligned	
<b>Media</b>	<b>Types</b>	Continuous form, gap labels, black mark sensing and punched hole; label length set by auto sensing or programming	
	<b>Width</b>	1" (25.4 mm) Min. - 4.64" (118 mm) Max.	
	<b>Thickness</b>	0.003" (0.06 mm) Min. - 0.01" (0.25 mm) Max.	
	<b>Label Roll Diameter</b>	Max. 5" (127 mm)	
	<b>Core Diameter</b>	1", 1.5", 3" (25.4 mm, 38.1 mm, 76.2 mm)	
<b>Ribbon</b>	<b>Types</b>	Wax, wax/resin, resin	
	<b>Length</b>	981' (300 m)	
	<b>Width</b>	1.18" Min. - 4.33" (30 mm - 110 mm) Max.	
	<b>Ribbon Roll Diameter</b>	2.67" (68 mm)	
	<b>Core Diameter</b>	1" (25.4 mm)	
<b>Printer Language</b>		EZPL, GEPL, GZPL, auto switch	
<b>Software</b>	<b>Label Design Software</b>	QLabel-IV (for EZPL only), GoLabel (for EZPL only)	
	<b>Driver</b>	Windows 2000, XP, Vista, 7, Windows Server 2003 & 2008	
	<b>DLL</b>	Windows 2000, XP and Vista	
<b>Resident Fonts</b>	<b>Bitmap Fonts</b>	6, 8, 10, 12, 14, 18, 24, 30, 16X26 and OCR A & B Bitmap fonts 90°, 180°, 270° rotatable, single characters 90°, 180°, 270° rotatable Bitmap fonts 8 times expandable in horizontal and vertical directions	
	<b>Scalable Fonts</b>	90°, 180°, 270° rotatable	
	<b>Asian Fonts</b>	90°, 180°, 270° rotatable, single characters 90°, 180°, 270° rotatable	
<b>Download Fonts</b>	<b>Asian Fonts</b>	90°, 180°, 270° rotatable and 8 times expandable in horizontal and vertical directions	
	<b>Scalable Fonts</b>	90°, 180°, 270° rotatable	
<b>Barcodes</b>	<b>1-D Bar Codes</b>	Code 39, Code 93, EAN 8 /13 (add on 2 & 5), UPC A/E (add on 2 & 5), 12 of 5 & 12 of 5 with Shipping Bearer Bars, Codabar, Code 128 (subset A, B, C), EAN 128, RPS 128, UCC 128, UCC/EAN-128 K-Mart, Random Weight, Post NET, ITF 14, China Postal Code, HIBC, MSI, Plessey, Telepen, FIM and GS1 DataBar	
	<b>2-D Bar Codes</b>	PDF417, Datamatrix code, MaxiCode, QR code, Micro PDF417, Micro QR code and Aztec code	
<b>Code Pages</b>		Codepage 437, 850, 851, 852, 855, 857, 860, 861, 862, 863, 865, 866, 869, 737 Windows 1250, 1251, 1252, 1253, 1254, 1255, 1257 Unicode (UTF8, UTF16)	
<b>Graphics</b>		Resident graphic file types are BMP and PCX, other graphic formats are downloadable from the software	
<b>Interfaces</b>		USB	USB
		Parallel	Serial Ethernet
<b>Control Panel</b>		Two bi-color status-LEDs : Ready, Status Control key : FEED	
<b>Power</b>		Auto Switching 100-240VAC, 50-60Hz	
<b>Environment</b>	<b>Operation Temperature</b>	41°F to 104°F (5°C to 40°C)	
	<b>Storage Temperature</b>	-4°F to 122°F (-20°C to 50°C)	
<b>Humidity</b>	<b>Operation</b>	30-85%, non-condensing	
	<b>Storage</b>	10-90%, non-condensing	
<b>Agency Approvals</b>		CE(EMC), FCC Class A, CB, cUL, CCC	
<b>Dimension</b>	<b>Length</b>	11.2" (285 mm)	
	<b>Height</b>	6.8" (171 mm)	
	<b>Width</b>	8.9" (226 mm)	
<b>Weight</b>		6 lbs (2.72 Kg), excluding consumables	
<b>Options &amp; Accessories</b>		Cutter module	
		Label Dispenser	
		External label roll holder for 10" (250 mm) O.D. label rolls	
		External label rewinder	

\* Specifications are subject to change without notice. All company and/or product names are trademarks and/or registered trademarks of their respective owners.  
\*\* Minimum print height specification compliance can be dependent on non-standard material variables such as label type, thickness, spacing, liner construction, etc. Godex is pleased to test non-standard materials for minimum height printing capability.